



# ALIASONIC

## Sanitary Type Ultrasonic Flowmeter

### Model AUF772 Series

## GENERAL

**ALIASONIC** The AUF772 Series sanitary type ultrasonic flowmeter adopts materials and new processes that meet the sanitary requirements of food industry. It uses stainless steel housing and clamp connection, which is easy to disassembly and cleaning. And it can effectively prevent pollution during using and the residues in the measuring tube. AUF772 can be widely used in food production process such as mineral water, soy sauce, jam, beer, juice, rice wine and milk, as well as in the fields of sanitation and chemical industry.

## FEATURES

- ❑ Clamp type sensor, non-contact measurement
- ❑ 2 line LCD display with flowrate, totalizer & signal condition
- ❑ Stores up 365 Day / Month / Year Totalizer daily value
- ❑ Wide range velocities of 0.01 ~ +/-32 m/s
- ❑ High accuracy of +/-0.5% of reading
- ❑ Various output types as 4-20 mA, pulse, RS485, HART
- ❑ With self-calibration function, real-time measurement calibration
- ❑ Accurate and stable measurement
- ❑ Response time less than 1 second

## STANDARD SPECIFICATION

- Measuring Principle : Transit time difference
- Pipe Size : 40-200 mm (1-1/2"-8")
- Body Material
  - Measuring Tube : S.S. 304 / S.S. 316 / S.S. 316L
  - Housing : S.S. 304
  - Separation Box : Aluminum alloy
- Process Connection : IDF Tri-Clamp or Screw Union
  - Tri-Clamp Standard : HAB / DIN32676 / ISO2852
  - Screw Union Standard : DIN11851
- Max. Pressure : 1.0 MPa
- Max. Temperature : -40~70 °C (Standard)  
: -40~160 °C (Optional)
- Display : 2 Line LCD with illumination
  - Flowrate : 7 Digit with decimal point
  - Totalizer : 8 Digit, Forward, Reverse & Net values.
  - Engineering Unit : m<sup>3</sup>, L, USgal, USbbl, ft<sup>3</sup>
  - Time Unit : sec, min, hour, day
  - Energy Unit : car/h, Kcal/h, Mcar/h, MJ/h, GJ/h, BTU/h
  - Other : Velocity, Date, Time, Signal condition.
- Accuracy : +/-0.5% of reading (0.5-30 m/s)
- Repeatability : +/-0.2% of reading



- Keypad : 16 Key with tactile action
- Response Time : <1 s
- Resolution : 0.0001 m/s
- Flow Velocity : 0.01 ~ +/-32 m/s
- Ambient Temperature : -20~50 °C
- Transmitter Mounting : Wall mounting
- Max. Cable Length : 100 m
- Power Consumption : <3 W
- Power Supply : 90-260 VAC 50/60 Hz and 24 VDC +/-10%
- Data Storage : Operation parameters and totalizer figures are stored by EEPROM for more than 10 years
- Current Output : 4-20 mA
- Pulse Output : 1 unit / pulse  
Rating : 12-24 VDC, 50 mA Max.
- Communication : RS485 (MODBUS) (Standard)  
: HART (Compatible) (Option)
- Protection Class  
Converter : IP65  
Sensor : IP67



## ALIA TECHNOLOGY LLC

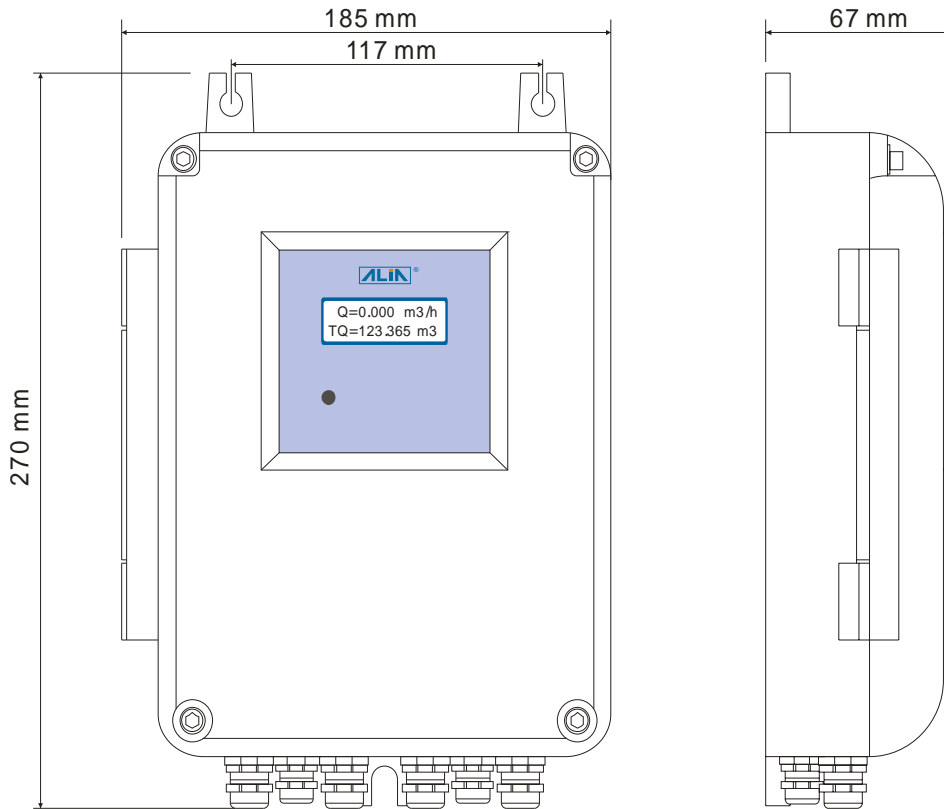
633 W. 5th Street, 26th Floor, Los Angeles, CA 90071, USA  
TEL : + 1 - 213 - 533 - 4139 FAX : + 1 - 213 - 223 - 2317



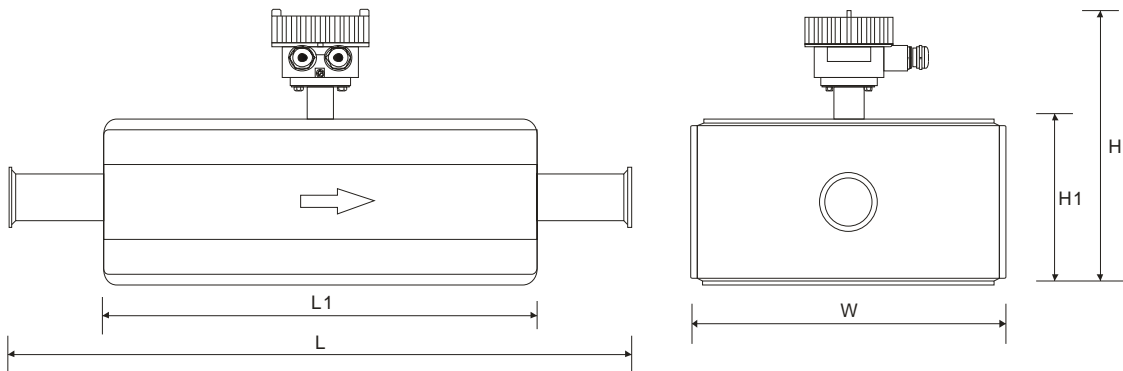
URL : [www.alia-inc.com](http://www.alia-inc.com)  
E-mail : [alia@alia-inc.com](mailto:alia@alia-inc.com)  
AUF772V1.2.3.r1.LT.en

**➤ DIMENSIONS**

**• Converter Dimensions**

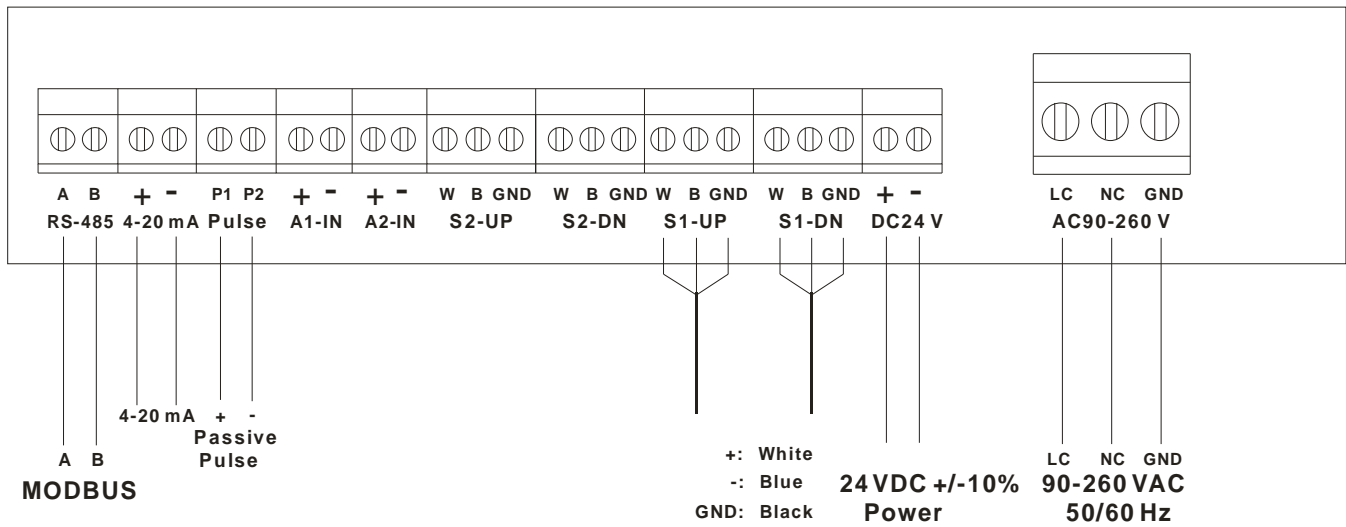


**• Sensor Dimensions**

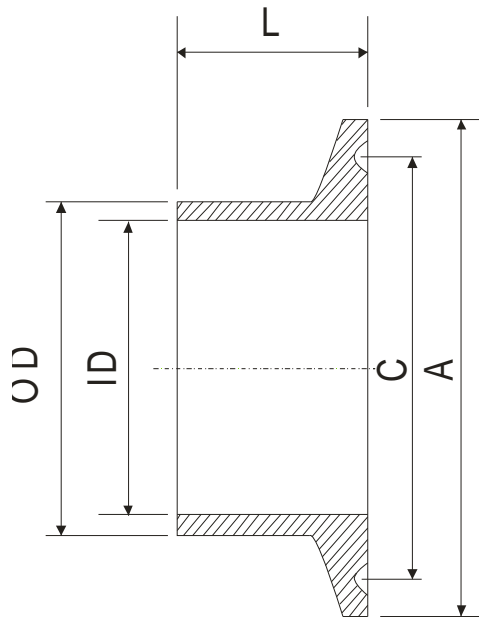


Normal Size		Dimensions (mm)					Weight
mm	Inch	L	L1	W	H1	H	kg
40	1-1/2"	360	260	210	120	250	11
50	2"	370	270	220	140	270	12
65	2-1/2"	390	285	235	160	290	13
80	3"	400	300	250	180	310	15
100	4"	420	320	270	200	330	17
125	5"	445	345	295	220	350	20
150	6"	470	370	320	250	380	23
200	8"	520	420	370	280	410	28

**WIRING DIAGRAM**



**TRI - CLAMP SPECIFICATIONS**

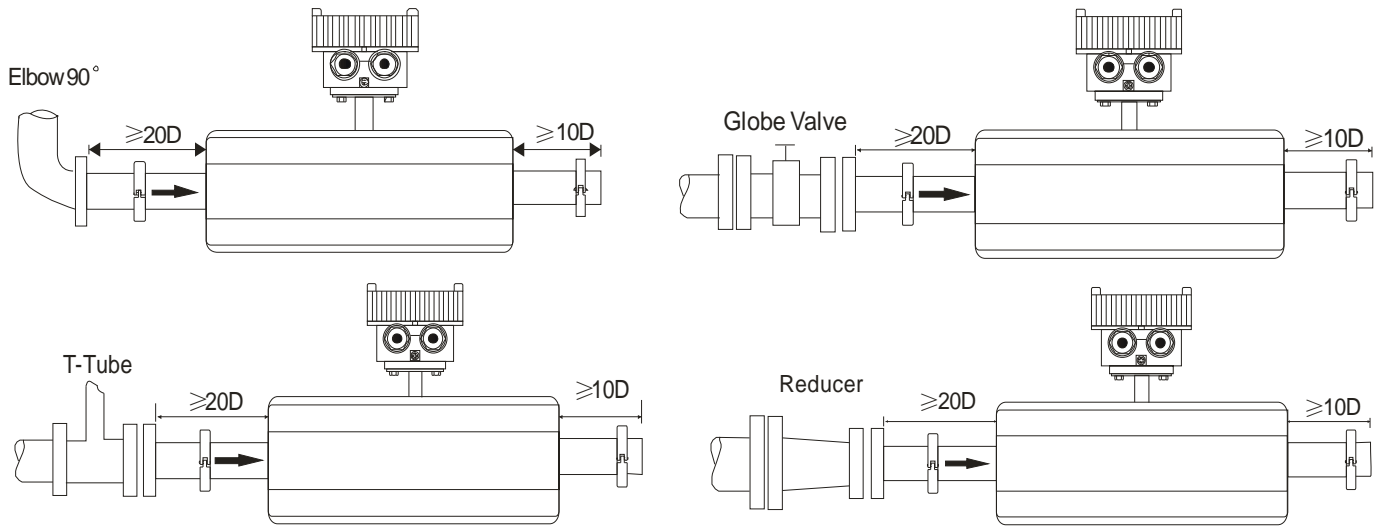


HDB (DIN 32676)								
Pipe Size	1-1/2"	2"	2-1/2"	3"	4"	5"	6"	8"
	40	50	65	80	100	125	150	200
ID	38.0	50.0	66.0	81.0	100.0	125.0	150.0	200.0
OD	42.0	54.0	70.0	85.0	104.0	129.0	154.0	204.0
A	50.5	64.0	91.0	106.0	119.0	155.0	183.0	233.5
C	43.5	56.5	83.5	97.0	110.0	146.0	174.0	225.0

HKB (ISO 2852)								
Pipe Size	1-1/2"	2"	2-1/2"	3"	4"	5"	6"	8"
	40	50	65	80	100	125	150	200
ID	35.6	48.6	60.3	72.9	97.6	110.3	135.7	213.9
OD	38.6	51.6	64.1	76.7	102.5	115.6	141.2	221.2
A	50.5	64.0	77.5	91.0	119.0	130.0	155.0	233.5
C	43.5	56.5	70.5	83.5	110.0	122.0	146.0	225.0

HAB								
Pipe Size	1-1/2"	2"	2-1/2"	3"	4"			
	40	50	65	80	100			
ID	34.8	47.5	60.2	72.9	97.4			
OD	38.1	50.8	63.5	76.2	101.6			
A	50.4	64	77.4	91	118.9			
C	43.6	56.3	70.6	83.3	110.3			

**CONDITIONS ON STRAIGHT PIPT**



**ACCESSORIES**



**MODEL SELECTION GUIDE**

AUF772 Series								
Example: AUF772-S6-050-A-N-010-NN-NN (AUF772 Converter+316 body (DN50, Tri-Clamps, HAB)+Cable 10m+90-260VAC and 24VDC Power)								
AUF772-	XX	-XXX	-X	-X	-XXX	-XX	-XX	Description
Tube	S4							Stainless Steel 304
	S6							Stainless Steel 316
	SL							Stainless Steel 316L
Size		-40~200						40, 50, 65, 80, 100, 125, 150, 200 mm
Process Connection			-A					Tri-Clamps, HAB
			-D					Tri-Clamps, HDB (DIN32676)
			-K					Tri-Clamps, HKB (ISO2852)
			-S					Screw Unions (DIN11851)
Max. Temperature			-N					-40~70 °C
			-H					-40~160 °C
Signal Cable Length					-NNN			10-100 m
Power Supply						-NN		90-260 VAC, 50/60 Hz and 24 VDC +/-10%
Option						-NN		None
						-HT		HART Signal (Compatible)
						-RC		IR Remote Control (Ex ib IIC T6)